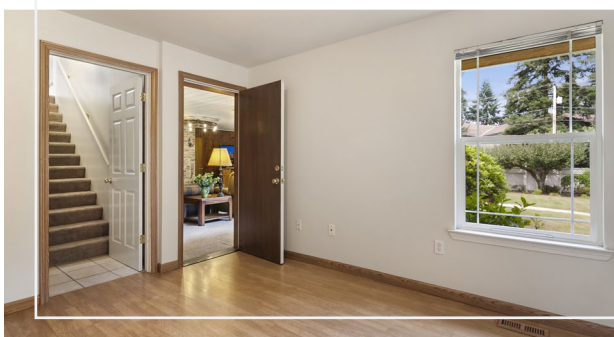




2 BEDROOM APARTMENT



BRIDLE TRAILS

5 BEDROOMS • 3.25 BATHROOMS
3,680 SF RAMBLER • 32,723 SF LEVEL LOT

- 4 Fireplaces
- Skylights
- Tile kitchen with large casual dining space and access to a darling front yard deck
- Generous family room with wood paneling and built-in shelving
- Formal living and dining rooms with hardwood floors and wood panelling and picture windows
- Master suite with a full bathroom and a walk-in closet
- Two bedrooms share a full Jack 'n Jill bathroom
- Large laundry room with walk-in pantry, wash basin, cabinets and a powder room
- Nearly every room offers access to the backyard patio and pool deck
- 2-bedroom apartment features a separate entrance; kitchen/family great room with gas fireplace and access to a private deck; ¾ bathroom; stacked washer and dryer and a bonus room - perfect MIL or rental unit
- 2-car garage with workshop
- Unfinished basement provides ample storage
- Level lawn • Fenced yard • In-ground pool • Landscaped garden beds • Vegetable gardens • Sprinkler system
- 2-stall barn, pasture and storage shed
- Prime location backing to Bridle Trails State Park
- Central vacuum
- Wired for a generator
- 2017 Taxes: \$9,605
- MLS #1166931

COLDWELL BANKER BAIN
Int'l Society of Excellence
Top 1%, CRS, GRI
(425) 450-5208
beth@bethbillington.com

BETH BILLINGTON
YOUR REAL ESTATE RESOURCE



BETHBILLINGTON.COM • BRIDLETRAILSTODAY.COM

\$1,298,000
5866 127TH AVE NE, KIRKLAND

Information from reliable sources but not guaranteed.

