



**SPECIFICATIONS & FEATURES**

3,150 SF Home  
29,248 SF Lot  
3 Bedrooms  
2.5 Bathrooms  
5-car garage with cabinets and built-in speakers  
Ample additional parking  
Built in 1956 and completely renovated in 2011-2012  
2015 Taxes: \$10,383  
MLS# 857780

**Front Courtyard** - attractive garden beds, decorative rain chain downspouts and a covered porch with tongue and groove soffits

**Inviting Entry** - French doors open to slate floors and picture windows to the front courtyard

**Masterful Kitchen** - leathered granite counters and stylish tile backsplash; lighted custom cabinets; heated tile floors; vaulted ceilings; a substantial island with breakfast bar, wine cooler, compactor and pendant lighting; high end, stainless steel appliances; TV cabinet; and a sunlit eating nook with access to the patio

**Dining Room** - generous dining room, perfect for entertaining, with a built-in wall unit, floor-to-ceiling brick fireplace, indoor barbecue, engineered wood flooring and vaulted wood ceilings adding architectural interest

**Living Room** - bold, floor-to-ceiling brick fireplace and wall of windows overlooking the pool and golf course

**Master Suite** - a special retreat featuring a generous bedroom with westerly views and an awe-inspiring 5-piece bathroom complete with two quartz vanities; a Zuma Collection soaking tub; tile shower with television, speaker and heated river rock floor; a large walk-in closet with custom built-ins; and access to a private zen garden/patio

**Multipurpose Room** - Laundry facilities, built-in shoe/coat cabinet system, desk, walk-in pantry, sink and cabinets

**Bedrooms** - Two additional spacious bedrooms

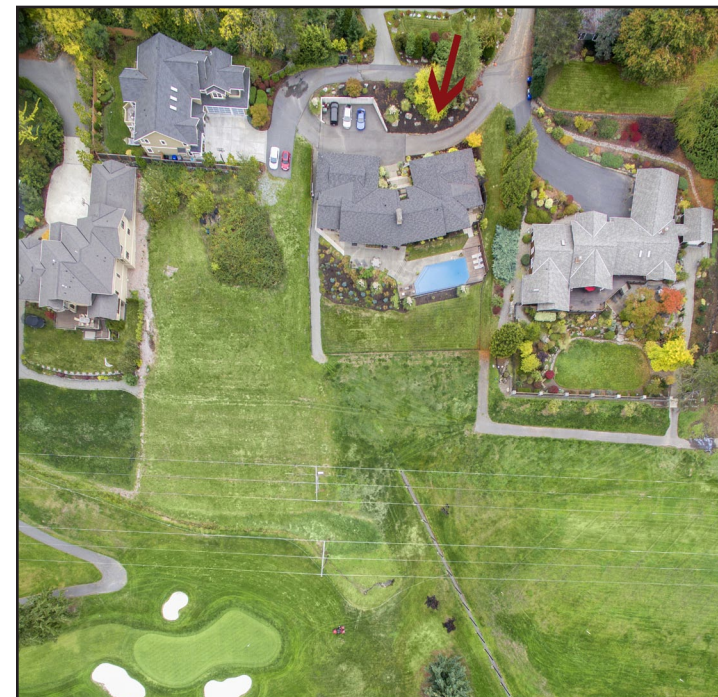
**Bathrooms** - Full Bathroom with dual sink quartz vanity and a powder room with quartz vanity

**Grounds** - professionally landscaped garden beds, lush lawn, in-ground salt water pool, entertainment patio, barbecue area with a gas line, multiple decks and direct access to the golf course

**Additional Highlights -**

- Security system • Lutron lighting • Built-in speakers
- Cart path with direct access to Glendale Golf Course
- Newer water heater with recirculation system
- Newer furnace • Central air conditioning
- Central vacuum • High tech wiring
- Newer commercial grade windows and doors
- Newer electrical and plumbing • Newer roof
- Ample storage • Heated crawl space
- 2 wood burning fireplaces plumbed for gas

BETH BILLINGTON  
Coldwell Banker Bain  
Int'l President's Premier  
Top 1%, CRS, GRI  
425.450.5208  
beth@bethbillington.com



**\$1,350,000**  
273 140th Ave NE, Bellevue

www.bethbillington.com | www.coldwellbankerpreviews.com



Information from reliable sources but not guaranteed.

# RESORT STYLE LIVING on Glendale Golf Course

This sprawling rambler has endured an impressive renovation with careful attention taken to maintain its mid-century modern appeal. The easy flowing floor plan is marked by walls of windows to showcase stunning westerly views of the golf course and Bellevue's skyline.

Perfectly sited at the end of Glenridge Lane, this gorgeous lot borders Glendale Golf Course and offers resort style amenities including an in-ground salt water pool, entertainment patio, two decks and a private zen garden located just off the spa-like master bathroom.

