

SPECIFICATIONS & FEATURES

3,718 Total SF • 3,430 Finished SF • 20,186 SF Lot
5 Bedrooms • 4 Bathrooms (2 full, 1-3/4, 1 powder room)
3 Fireplaces • 2015 Taxes : \$11,225 • MLS #753285

MAIN

- The glass main entry rises two stories and features original inlaid panels of hand-blown stained glass.
- Spacious family room with wet bar, brick fireplace and a wall of windows to showcase the views
- 4 bedrooms, 3 with built-in desks
- Full bathroom and a 3/4 bathroom

UPSTAIRS

- The ultimate great room provides the ideal venue for entertaining with a fireplace, living and dining areas, view deck and an enclosed atrium. The atrium is lined with walnut and features quarried tile, raised ceiling, clerestory windows and sliding glass doors that fully open for a seamless transition. A wall of windows ensures your guests won't miss the alluring bay views.
- Open to the great room, the updated kitchen boasts custom walnut cabinets by HenryBuilt, polished concrete countertops by Dogpaw Design, a skylight, tile floors and top of the line appliances including two dishwashers, a Subzero, Dacor range, wine cooler and beverage cooler.
- The romantic master suite includes a generous bedroom, full bathroom and ample closet space.
- Handsome den with floor-to-ceiling windows, brick fireplace and built-in shelving
- Powder room with large vanity

LOWER

- Exercise/multipurpose room with tile floors
- Oversized two-car garage with floor-to-ceiling windows and a workshop
- Second laundry room and additional storage space

GROUNDS

- Home to impressive native old-growth trees and refined landscaping, the half acre retreat includes lake access, an inviting front approach with box hedges, garden and rock beds, level grass areas, a deck and pathways designed by The Berger Partnership to guide you through all its wonder.

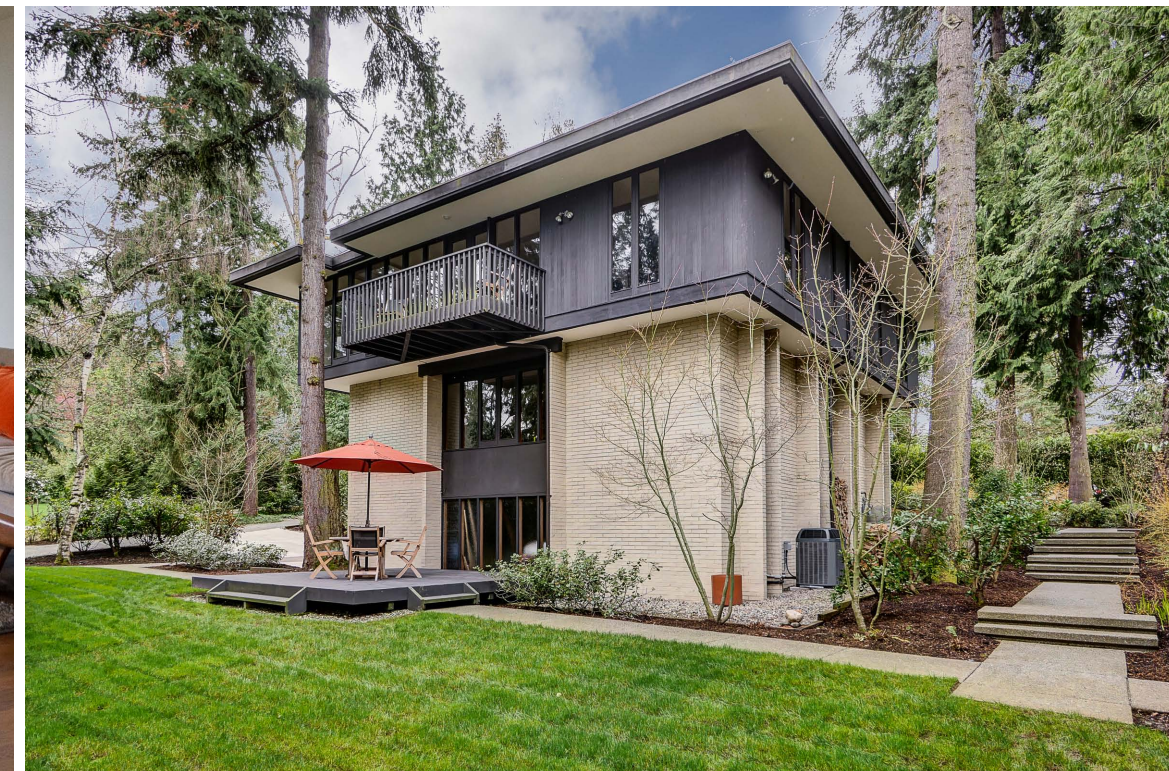
ADDITIONAL HIGHLIGHTS

- Central air conditioning
- Security system
- Sprinkler system
- Landscape lighting



MEDINA MODERN

\$2,188,000



Information from reliable sources but not guaranteed.



www.coldwellbankerpreviews.com

BETH BILLINGTON
Coldwell Banker Bain
Int'l President's Premier
Top 1%, CRS, GRI
425.450.5208
beth@bethbillington.com



3434 Evergreen Point Road

www.bethbillington.com | www.medinamodern.com





TIMELESS TREASURE

Perfectly sited on a generous lot with direct access to Lake Washington, this 1964 Mid-Century Modern was recognized as Home of the Year by the Seattle Chapter of the American Institute of Architects and The Seattle Times. Since then, it has been meticulously maintained and tastefully updated with special attention taken to preserve its timeless appeal.

Thoughtfully designed by architect Ibsen Nelson of Nelson, Sabin & Varey to blend the interior living space with its lush natural setting, it employs an open concept with clean lines, generous rooms, exposed brick, rich hardwood floors and expansive floor-to-ceiling windows. Stunning views of Fairweather Bay can be enjoyed from both the main and upper levels.

The highly sought after location in Medina offers convenient access to downtown Bellevue and SR 520 for an easy commute to Seattle.

